

Acta Crystallographica Section E

## Structure Reports

Online

ISSN 1600-5368

## 1-Benzoyl-3-(pyridin-2-yl)-1H-pyrazole

Alexander H. Shelton,<sup>a</sup> Andrew Stephenson,<sup>a</sup> Michael D. Ward<sup>a</sup> and Mohammad B. Kassim<sup>b,c,\*</sup><sup>a</sup>Department of Chemistry, University of Sheffield, Sheffield S3 7HF, England,<sup>b</sup>School of Chemical Sciences & Food Technology, Faculty of Science & Technology, Universiti Kebangsaan Malaysia, 43600 Selangor, Malaysia, and <sup>c</sup>Fuel Cell Institute, Universiti Kebangsaan Malaysia, 43600 Selangor, Malaysia

Correspondence e-mail: mbkassim@ukm.my

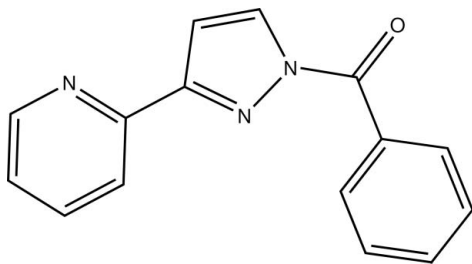
Received 16 August 2011; accepted 16 August 2011

Key indicators: single-crystal X-ray study;  $T = 296$  K; mean  $\sigma(\text{C}-\text{C}) = 0.001$  Å;  $R$  factor = 0.035;  $wR$  factor = 0.097; data-to-parameter ratio = 15.8.

In the title compound,  $\text{C}_{15}\text{H}_{11}\text{N}_3\text{O}$ , the dihedral angle between the heterocyclic rings is  $9.23(5)^\circ$  and the dihedral angle between the benzoyl and pyrazole rings is  $58.64(5)^\circ$ . In the crystal, inversion dimers linked by pairs of  $\text{C}-\text{H}\cdots\text{O}$  hydrogen bonds generate  $R_2^2(10)$  loops. The dimers stack into a column running parallel to the  $b$ -axis direction.

## Related literature

For related structures and background, see: Jones *et al.* (1997); Adams *et al.* (2006); Al-abbasi & Kassim (2011). For reference bond lengths, see: Allen *et al.* (1987).



## Experimental

## Crystal data

$\text{C}_{15}\text{H}_{11}\text{N}_3\text{O}$   
 $M_r = 249.27$   
 Monoclinic,  $P2_1/n$   
 $a = 10.6325(11)$  Å

$b = 5.7775(6)$  Å  
 $c = 19.572(2)$  Å  
 $\beta = 98.426(6)^\circ$   
 $V = 1189.3(2)$  Å<sup>3</sup>

$Z = 4$   
 Mo  $K\alpha$  radiation  
 $\mu = 0.09$  mm<sup>-1</sup>

$T = 296$  K  
 $0.20 \times 0.15 \times 0.10$  mm

## Data collection

Bruker SMART APEX CCD diffractometer  
 Absorption correction: multi-scan (SADABS; Bruker, 2000)  
 $T_{\min} = 0.982$ ,  $T_{\max} = 0.991$

10450 measured reflections  
 2735 independent reflections  
 2532 reflections with  $I > 2\sigma(I)$   
 $R_{\text{int}} = 0.023$

## Refinement

$R[F^2 > 2\sigma(F^2)] = 0.035$   
 $wR(F^2) = 0.097$   
 $S = 1.00$   
 2735 reflections

173 parameters  
 H-atom parameters constrained  
 $\Delta\rho_{\text{max}} = 0.35$  e Å<sup>-3</sup>  
 $\Delta\rho_{\text{min}} = -0.22$  e Å<sup>-3</sup>

Table 1

Hydrogen-bond geometry (Å, °).

| $D-\text{H}\cdots A$                   | $D-\text{H}$ | $\text{H}\cdots A$ | $D\cdots A$ | $D-\text{H}\cdots A$ |
|--|--------------|--------------------|-------------|----------------------|
| $\text{C8}-\text{H8}\cdots\text{O1}^i$ | 0.93         | 2.44               | 3.3720 (13) | 175                  |

Symmetry code: (i)  $-x, -y + 3, -z$ .

Data collection: SMART (Bruker, 2000); cell refinement: SAINT (Bruker, 2000); data reduction: SAINT; program(s) used to solve structure: SHELXS97 (Sheldrick, 2008); program(s) used to refine structure: SHELXL97 (Sheldrick, 2008); molecular graphics: SHELXTL (Sheldrick, 2008); software used to prepare material for publication: SHELXTL, PARST (Nardelli, 1995) and PLATON (Spek, 2009).

The authors gratefully acknowledge Universiti Kebangsaan Malaysia for the UKM-GUP-BTT-07-30-190 and UKM-OUP-TK-16-73/2010 & 2011 grants and sabbatical leave for MBK at the University of Sheffield. They also thank the RSC, UK, for financial support from the Leverhulme trust.

Supplementary data and figures for this paper are available from the IUCr electronic archives (Reference: HB6370).

## References

- Adams, H., Alsindi, W. Z., Davies, G. M., Duriska, M. B., Easun, T. L., Fenton, H. E., Herrera, J.-M., George, M. W., Ronayne, K. L., Sun, X.-Z., Towrie, M. & Ward, M. D. (2006). *Dalton Trans.* pp. 39–50.  
 Al-abbasi, A. A. & Kassim, M. B. (2011). *Acta Cryst.* E67, o611.  
 Allen, F. H., Kennard, O., Watson, D. G., Brammer, L., Orpen, A. G. & Taylor, R. (1987). *J. Chem. Soc. Perkin Trans. 2*, pp. S1–19.  
 Bruker (2000). SADABS, SMART and SAINT. Bruker AXS Inc., Madison, Wisconsin, USA.  
 Jones, P. L., Amoroso, A. J., Jeffery, J. C., McCleverty, J. A., Psillakis, E., Rees, L. H. & Ward, M. D. (1997). *Inorg. Chem.* 36, 10–18.  
 Nardelli, M. (1995). *J. Appl. Cryst.* 28, 659.  
 Sheldrick, G. M. (2008). *Acta Cryst.* A64, 112–122.  
 Spek, A. L. (2009). *Acta Cryst.* D65, 148–155.

**supplementary materials**

*Acta Cryst.* (2011). E67, o2445 [ doi:10.1107/S1600536811033368 ]

## 1-Benzoyl-3-(pyridin-2-yl)-1*H*-pyrazole

A. H. Shelton, A. Stephenson, M. D. Ward and M. B. Kassim

### Comment

The starting material, 3-(2-pyridyl)pyrazole, is a bidentate ligand which is commonly used in coordination chemistry (Jones *et al.* 1997 & Adams *et al.* 2006). The title compound is made up of a 3-(2-pyridyl)pyrazole and benzoyl fragments. This new compound has a potential to be applied as a tridentate ligand (*ONN*) involving the O atom on the carbonyl group and the N atom on the pyrazole and pyridine rings.

In the crystal structure, the mean planes of acetamide (O1/N1/C1/C7) and the benzene (C1/C2/C3/C4/C5/C6) fragments make a dihedral angle of 49.54 (5)° with each other. The mean planes of the pyrazole and pyridyl rings are slightly twisted and make a dihedral 9.23 (5)°. The C7—O1 bond length 1.2117 (12) is slightly longer than that of the C=O found in another benzoyl derivative, 1-ethyl-1-methyl-3-(2-nitrobenzoyl)thiourea (Al-abbasi & Kassim, 2011). Other bond lengths and angles within the compounds are in the normal ranges (Allen *et al.* 1987).

A C—H···O intermolecular hydrogen bond links adjacent molecules into centrosymmetric dimers forming a one dimensional column parallel to the *b*-axis.

### Experimental

3-(2-pyridyl)pyrazole (0.728 g, 5.0 mmol) was deprotonated by reacting with NaH (60% in mineral oil) in 30 ml of dry THF under N<sub>2</sub> at room temperature for 2 h. Then, benzoyl chloride (0.702 g, 5.0 mmol) was added slowly to the mixture and the temperature was brought to reflux and left stirring for 4 hrs. The solvent was removed and the residue was re-dissolved in a minimum volume of DCM, washed 3 times with 30 ml of distilled water. The organic fraction was collected and dried with MgSO<sub>4</sub>, filtered and the solvent was removed *in vacuo*. Slow evaporation of acetone/DCM solution of the residue afforded colourless blocks of (I). Yield 78%.

### Refinement

All H atoms were positioned geometrically with C—H bond lengths in the range of 0.93 - 0.97 Å and refined in the riding model approximation with  $U_{\text{iso}}(\text{H})=1.2U_{\text{eq}}(\text{C})$ .

### Figures

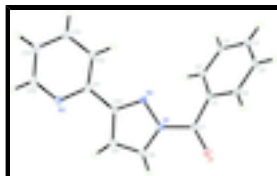


Fig. 1. The molecular structure of the title compound with displacement ellipsoids drawn at the 30% probability level.

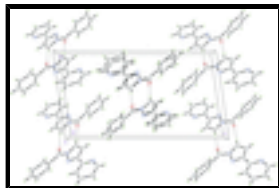


Fig. 2. A packing diagram of the title compound viewing down the *b*-axis showing the intermolecular hydrogen bonds C—H···O ( $-x, 3 - y, -z$ ).

## 1-Benzoyl-3-(pyridin-2-yl)-1H-pyrazole

### Crystal data

|                                |   |
|--------------------------------|---|
| $C_{15}H_{11}N_3O$             | $F(000) = 520$  |
| $M_r = 249.27$                 | $D_x = 1.392 \text{ Mg m}^{-3}$                         |
| Monoclinic, $P2_1/n$           | Mo $K\alpha$ radiation, $\lambda = 0.71073 \text{ \AA}$ |
| Hall symbol: $-P 2_1n$         | Cell parameters from 7032 reflections                   |
| $a = 10.6325 (11) \text{ \AA}$ | $\theta = 4.7\text{--}55.0^\circ$                       |
| $b = 5.7775 (6) \text{ \AA}$   | $\mu = 0.09 \text{ mm}^{-1}$                            |
| $c = 19.572 (2) \text{ \AA}$   | $T = 296 \text{ K}$                                     |
| $\beta = 98.426 (6)^\circ$     | Block, colourless                                       |
| $V = 1189.3 (2) \text{ \AA}^3$ | $0.20 \times 0.15 \times 0.10 \text{ mm}$               |
| $Z = 4$                        |   |

### Data collection

|   |  |
|---|--|
| Bruker SMART APEX CCD diffractometer                              | 2735 independent reflections   |
| Radiation source: fine-focus sealed tube graphite                 | 2532 reflections with $I > 2\sigma(I)$                                 |
| $\omega$ scans  | $R_{\text{int}} = 0.023$   |
| Absorption correction: multi-scan ( <i>SADABS</i> ; Bruker, 2000) | $\theta_{\text{max}} = 27.5^\circ$ , $\theta_{\text{min}} = 2.1^\circ$ |
| $T_{\text{min}} = 0.982$ , $T_{\text{max}} = 0.991$               | $h = -13 \rightarrow 13$   |
| 10450 measured reflections  | $k = -7 \rightarrow 7$   |
|   | $l = -25 \rightarrow 25$   |

### Refinement

|                                 |   |
|---------------------------------|---|
| Refinement on $F^2$             | Secondary atom site location: difference Fourier map        |
| Least-squares matrix: full      | Hydrogen site location: inferred from neighbouring sites    |
| $R[F^2 > 2\sigma(F^2)] = 0.035$ | H-atom parameters constrained                               |
| $wR(F^2) = 0.097$               | $w = 1/[\sigma^2(F_o^2) + (0.0577P)^2 + 0.430P]$            |
| $S = 1.00$                      | where $P = (F_o^2 + 2F_c^2)/3$                              |
| 2735 reflections                | $(\Delta/\sigma)_{\text{max}} < 0.001$                      |
| 173 parameters                  | $\Delta\rho_{\text{max}} = 0.35 \text{ e \AA}^{-3}$         |
| 0 restraints                    | $\Delta\rho_{\text{min}} = -0.22 \text{ e \AA}^{-3}$        |
|                                 | Extinction correction: <i>SHELXL97</i> (Sheldrick, 2008),   |
|                                 | $F_c^* = kFc[1 + 0.001xFc^2\lambda^3/\sin(2\theta)]^{-1/4}$ |

Primary atom site location: structure-invariant direct methods Extinction coefficient: 0.025 (3)

*Special details*

**Geometry.** All e.s.d.'s (except the e.s.d. in the dihedral angle between two l.s. planes) are estimated using the full covariance matrix. The cell e.s.d.'s are taken into account individually in the estimation of e.s.d.'s in distances, angles and torsion angles; correlations between e.s.d.'s in cell parameters are only used when they are defined by crystal symmetry. An approximate (isotropic) treatment of cell e.s.d.'s is used for estimating e.s.d.'s involving l.s. planes.

**Refinement.** Refinement of  $F^2$  against ALL reflections. The weighted  $R$ -factor  $wR$  and goodness of fit  $S$  are based on  $F^2$ , conventional  $R$ -factors  $R$  are based on  $F$ , with  $F$  set to zero for negative  $F^2$ . The threshold expression of  $F^2 > \sigma(F^2)$  is used only for calculating  $R$ -factors(gt) *etc.* and is not relevant to the choice of reflections for refinement.  $R$ -factors based on  $F^2$  are statistically about twice as large as those based on  $F$ , and  $R$ -factors based on ALL data will be even larger.

*Fractional atomic coordinates and isotropic or equivalent isotropic displacement parameters ( $\text{\AA}^2$ )*

|     | <i>x</i>     | <i>y</i>     | <i>z</i>     | $U_{\text{iso}}^*/U_{\text{eq}}$ |
|-----|--------------|--------------|--------------|----------------------------------|
| O1  | 0.13720 (7)  | 1.43117 (13) | 0.06519 (4)  | 0.02310 (19)                     |
| N1  | 0.16990 (8)  | 1.10288 (14) | 0.00732 (4)  | 0.01636 (19)                     |
| N2  | 0.24411 (8)  | 0.91307 (15) | -0.00018 (4) | 0.01622 (19)                     |
| N3  | 0.22475 (8)  | 0.59436 (16) | -0.15957 (4) | 0.0200 (2)                       |
| C4  | 0.43069 (10) | 1.04513 (19) | 0.25014 (5)  | 0.0206 (2)                       |
| H4  | 0.4799       | 1.0072       | 0.2919       | 0.025*                           |
| C3  | 0.34100 (10) | 0.88896 (18) | 0.21845 (5)  | 0.0187 (2)                       |
| H3  | 0.3304       | 0.7468       | 0.2392       | 0.022*                           |
| C2  | 0.26702 (9)  | 0.94408 (18) | 0.15592 (5)  | 0.0172 (2)                       |
| H2  | 0.2096       | 0.8371       | 0.1338       | 0.021*                           |
| C1  | 0.27989 (9)  | 1.16160 (17) | 0.12676 (5)  | 0.0162 (2)                       |
| C7  | 0.19083 (9)  | 1.24595 (17) | 0.06590 (5)  | 0.0169 (2)                       |
| C10 | 0.20214 (9)  | 0.83729 (17) | -0.06333 (5) | 0.0158 (2)                       |
| C11 | 0.26054 (9)  | 0.63418 (17) | -0.09172 (5) | 0.0163 (2)                       |
| C15 | 0.27577 (11) | 0.4098 (2)   | -0.18654 (5) | 0.0231 (2)                       |
| H15 | 0.2519       | 0.3799       | -0.2333      | 0.028*                           |
| C14 | 0.36167 (10) | 0.26093 (19) | -0.14932 (6) | 0.0231 (2)                       |
| H14 | 0.3938       | 0.1344       | -0.1705      | 0.028*                           |
| C5  | 0.44676 (10) | 1.25791 (19) | 0.21942 (5)  | 0.0209 (2)                       |
| H5  | 0.5091       | 1.3597       | 0.2397       | 0.025*                           |
| C6  | 0.36981 (10) | 1.31859 (18) | 0.15852 (5)  | 0.0189 (2)                       |
| H6  | 0.3781       | 1.4634       | 0.1389       | 0.023*                           |
| C13 | 0.39894 (10) | 0.30481 (19) | -0.07940 (6) | 0.0216 (2)                       |
| H13 | 0.4570       | 0.2089       | -0.0529      | 0.026*                           |
| C12 | 0.34759 (9)  | 0.49456 (18) | -0.05019 (5) | 0.0186 (2)                       |
| H12 | 0.3708       | 0.5284       | -0.0036      | 0.022*                           |
| C9  | 0.10122 (9)  | 0.97734 (18) | -0.09703 (5) | 0.0187 (2)                       |
| H9  | 0.0569       | 0.9577       | -0.1413      | 0.022*                           |
| C8  | 0.08350 (9)  | 1.14563 (18) | -0.05088 (5) | 0.0185 (2)                       |
| H8  | 0.0247       | 1.2657       | -0.0573      | 0.022*                           |

## supplementary materials

---

### Atomic displacement parameters ( $\text{\AA}^2$ )

|     | $U^{11}$   | $U^{22}$   | $U^{33}$   | $U^{12}$    | $U^{13}$   | $U^{23}$    |
|-----|------------|------------|------------|-------------|------------|-------------|
| O1  | 0.0271 (4) | 0.0165 (4) | 0.0252 (4) | 0.0037 (3)  | 0.0025 (3) | -0.0009 (3) |
| N1  | 0.0175 (4) | 0.0150 (4) | 0.0165 (4) | 0.0007 (3)  | 0.0020 (3) | 0.0007 (3)  |
| N2  | 0.0181 (4) | 0.0141 (4) | 0.0167 (4) | 0.0002 (3)  | 0.0031 (3) | -0.0001 (3) |
| N3  | 0.0232 (4) | 0.0211 (5) | 0.0159 (4) | -0.0032 (3) | 0.0029 (3) | -0.0016 (3) |
| C4  | 0.0183 (5) | 0.0258 (5) | 0.0175 (5) | 0.0038 (4)  | 0.0021 (4) | -0.0022 (4) |
| C3  | 0.0211 (5) | 0.0173 (5) | 0.0184 (5) | 0.0032 (4)  | 0.0055 (4) | 0.0011 (4)  |
| C2  | 0.0183 (5) | 0.0155 (5) | 0.0181 (5) | -0.0010 (4) | 0.0039 (4) | -0.0024 (4) |
| C1  | 0.0181 (4) | 0.0162 (5) | 0.0150 (4) | 0.0003 (4)  | 0.0047 (3) | -0.0022 (4) |
| C7  | 0.0187 (5) | 0.0151 (5) | 0.0177 (4) | -0.0018 (4) | 0.0050 (4) | -0.0003 (4) |
| C10 | 0.0167 (4) | 0.0161 (5) | 0.0148 (4) | -0.0027 (4) | 0.0025 (3) | 0.0014 (4)  |
| C11 | 0.0162 (4) | 0.0168 (5) | 0.0162 (4) | -0.0035 (4) | 0.0035 (3) | -0.0005 (4) |
| C15 | 0.0265 (5) | 0.0248 (5) | 0.0189 (5) | -0.0055 (4) | 0.0066 (4) | -0.0049 (4) |
| C14 | 0.0217 (5) | 0.0205 (5) | 0.0290 (5) | -0.0035 (4) | 0.0105 (4) | -0.0065 (4) |
| C5  | 0.0181 (5) | 0.0233 (5) | 0.0216 (5) | -0.0034 (4) | 0.0038 (4) | -0.0062 (4) |
| C6  | 0.0218 (5) | 0.0161 (5) | 0.0198 (5) | -0.0024 (4) | 0.0066 (4) | -0.0022 (4) |
| C13 | 0.0170 (5) | 0.0200 (5) | 0.0281 (5) | -0.0009 (4) | 0.0039 (4) | 0.0006 (4)  |
| C12 | 0.0179 (4) | 0.0198 (5) | 0.0178 (5) | -0.0027 (4) | 0.0020 (3) | -0.0006 (4) |
| C9  | 0.0179 (5) | 0.0209 (5) | 0.0168 (4) | -0.0008 (4) | 0.0010 (4) | 0.0019 (4)  |
| C8  | 0.0169 (4) | 0.0190 (5) | 0.0192 (5) | 0.0000 (4)  | 0.0010 (4) | 0.0033 (4)  |

### Geometric parameters ( $\text{\AA}$ , $^\circ$ )

|            |             |             |             |
|------------|-------------|-------------|-------------|
| O1—C7      | 1.2116 (12) | C10—C9      | 1.4260 (14) |
| N1—N2      | 1.3713 (12) | C10—C11     | 1.4740 (14) |
| N1—C8      | 1.3768 (12) | C11—C12     | 1.3955 (14) |
| N1—C7      | 1.4045 (13) | C15—C14     | 1.3819 (16) |
| N2—C10     | 1.3255 (12) | C15—H15     | 0.9300      |
| N3—C15     | 1.3393 (14) | C14—C13     | 1.3910 (15) |
| N3—C11     | 1.3465 (12) | C14—H14     | 0.9300      |
| C4—C5      | 1.3900 (15) | C5—C6       | 1.3883 (14) |
| C4—C3      | 1.3910 (15) | C5—H5       | 0.9300      |
| C4—H4      | 0.9300      | C6—H6       | 0.9300      |
| C3—C2      | 1.3913 (14) | C13—C12     | 1.3850 (15) |
| C3—H3      | 0.9300      | C13—H13     | 0.9300      |
| C2—C1      | 1.3952 (14) | C12—H12     | 0.9300      |
| C2—H2      | 0.9300      | C9—C8       | 1.3589 (15) |
| C1—C6      | 1.3961 (14) | C9—H9       | 0.9300      |
| C1—C7      | 1.4908 (13) | C8—H8       | 0.9300      |
| N2—N1—C8   | 112.31 (8)  | C12—C11—C10 | 121.39 (9)  |
| N2—N1—C7   | 122.22 (8)  | N3—C15—C14  | 124.21 (10) |
| C8—N1—C7   | 125.20 (9)  | N3—C15—H15  | 117.9       |
| C10—N2—N1  | 104.10 (8)  | C14—C15—H15 | 117.9       |
| C15—N3—C11 | 116.90 (9)  | C15—C14—C13 | 118.44 (10) |
| C5—C4—C3   | 120.04 (9)  | C15—C14—H14 | 120.8       |

|            |             |             |             |
|------------|-------------|-------------|-------------|
| C5—C4—H4   | 120.0       | C13—C14—H14 | 120.8       |
| C3—C4—H4   | 120.0       | C6—C5—C4    | 120.02 (10) |
| C4—C3—C2   | 120.40 (10) | C6—C5—H5    | 120.0       |
| C4—C3—H3   | 119.8       | C4—C5—H5    | 120.0       |
| C2—C3—H3   | 119.8       | C5—C6—C1    | 119.82 (10) |
| C3—C2—C1   | 119.29 (9)  | C5—C6—H6    | 120.1       |
| C3—C2—H2   | 120.4       | C1—C6—H6    | 120.1       |
| C1—C2—H2   | 120.4       | C12—C13—C14 | 118.53 (10) |
| C2—C1—C6   | 120.32 (9)  | C12—C13—H13 | 120.7       |
| C2—C1—C7   | 122.17 (9)  | C14—C13—H13 | 120.7       |
| C6—C1—C7   | 117.18 (9)  | C13—C12—C11 | 119.02 (9)  |
| O1—C7—N1   | 119.50 (9)  | C13—C12—H12 | 120.5       |
| O1—C7—C1   | 122.72 (9)  | C11—C12—H12 | 120.5       |
| N1—C7—C1   | 117.77 (9)  | C8—C9—C10   | 105.47 (9)  |
| N2—C10—C9  | 111.81 (9)  | C8—C9—H9    | 127.3       |
| N2—C10—C11 | 120.77 (9)  | C10—C9—H9   | 127.3       |
| C9—C10—C11 | 127.41 (9)  | C9—C8—N1    | 106.31 (9)  |
| N3—C11—C12 | 122.90 (9)  | C9—C8—H8    | 126.8       |
| N3—C11—C10 | 115.72 (9)  | N1—C8—H8    | 126.8       |

*Hydrogen-bond geometry* (Å, °)

| <i>D</i> —H $\cdots$ <i>A</i>  | <i>D</i> —H | H $\cdots$ <i>A</i> | <i>D</i> $\cdots$ <i>A</i> | <i>D</i> —H $\cdots$ <i>A</i> |
|--------------------------------|-------------|---------------------|----------------------------|-------------------------------|
| C8—H8 $\cdots$ O1 <sup>i</sup> | 0.93        | 2.44                | 3.3720 (13)                | 175                           |

Symmetry codes: (i)  $-x, -y+3, -z$ .

Fig. 1

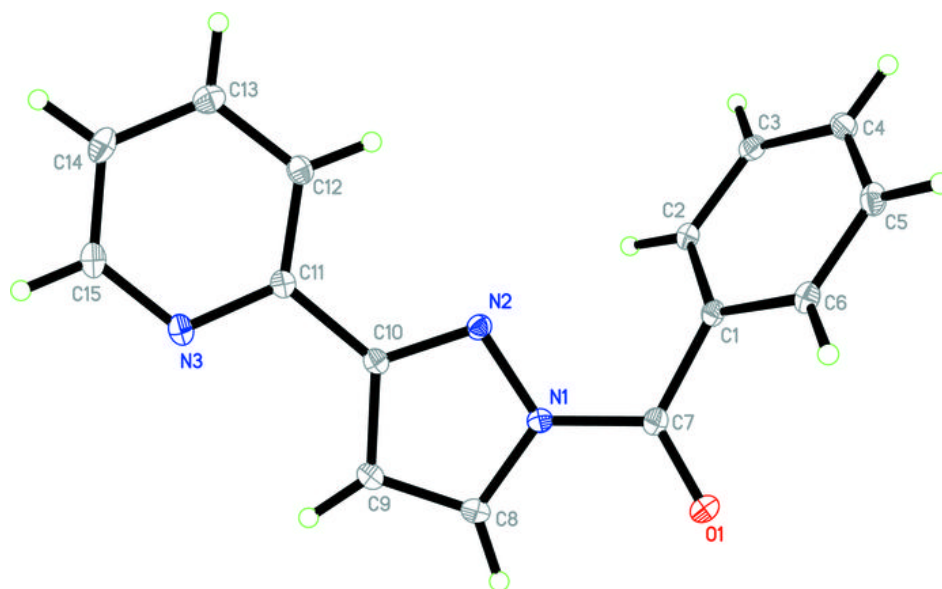




Fig. 2

